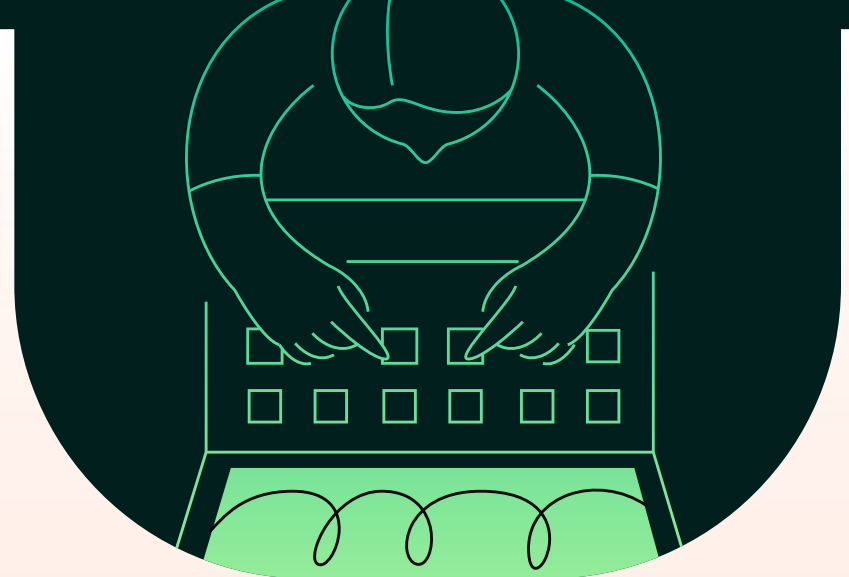




## AI Service Desk *Comparison*

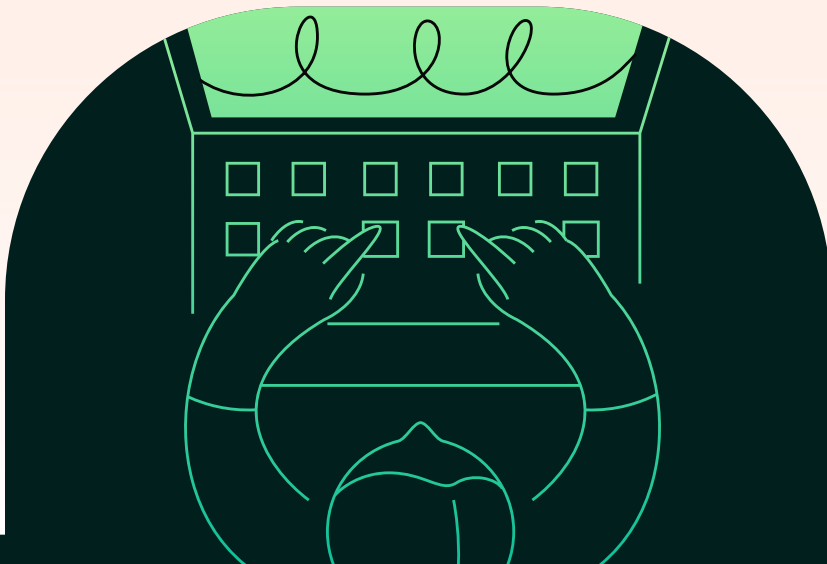
The AI service desk market moved faster in the last 12 months than most MSPs had time to track. What started as a handful of vendors offering AI-assisted triage has become a crowded field of platforms each claiming to automate, streamline, and transform how service desks operate. The promises are starting to sound the same. The differences are not.

This guide exists to cut through that. If you are evaluating AI service desk platforms for your MSP in 2026, you need more than feature lists and marketing copy. You need to understand what each platform actually does, where it focuses, and where it falls short.



We looked at the five platforms MSPs are most actively considering right now: Thread, NeoAgent, MSP Process, zofiQ (ConnectWise), and CloudRadial. We compared them across the capabilities that matter most to how a modern service desk runs: how they handle customer interactions, how they automate back-office work, how intelligently they use your data, how well they support your technicians, how they integrate with your existing stack, and what you are actually signing up for when it comes to pricing and time to value.

No platform on this list does everything. The right choice depends on where your biggest operational gaps are and what kind of service experience you want to deliver. Read through, compare honestly, and make the call that fits your MSP.



## CUSTOMER-FACING AI

This is where the biggest differences live. Every platform on this list claims to handle customer interactions, but the reality varies significantly. Some are built around the customer experience from the ground up. Others treat it as a secondary layer bolted onto back-office automation. How a platform handles the conversation between your clients and your service desk says a lot about its overall philosophy.

Feature	Thread	NeoAgent	MSP Process	zofiQ	CloudRadial
<b>Voice AI (inbound, intake, triage)</b>	Yes	Partial	Yes	No	No
<b>Live Chat / Conversational AI</b>	Yes	No	Partial	No	Yes
<b>Microsoft Teams Integration</b>	Yes	Partial	Yes	No	No
<b>Slack Integration</b>	Yes	No	No	No	No
<b>End-User Self-Service Resolution</b>	Yes	No	Partial	No	Yes
<b>Multi-Channel Intake (SMS, WhatsApp, email, portal)</b>	Partial	Partial	Yes	No	No
<b>End-User / Caller Verification</b>	Partial	No	Yes	No	No

**NeoAgent voice exists but described internally and publicly as robotic and limited**

\*\*NeoAgent Teams and SMS are on the roadmap per their docs, not fully live

\*\*\*Thread verification in development per John's comments

## BACK-OFFICE AUTOMATION

Triage, routing, dispatch, documentation. These are the tasks that quietly drain technician hours every day. Most platforms on this list have made meaningful progress here, and automated triage in particular is now widely available. The real differentiators are whether the platform can dispatch intelligently, whether it can close tickets without human intervention, and whether it learns and improves over time or just applies static rules.

Feature	Thread	NeoAgent	MSP Process	zofiQ	CloudRadial
AI Ticket Triage	Yes	Yes	Yes	Yes	Yes
AI Ticket Routing	Partial	Yes	Yes	Yes	Yes
AI Dispatch	No	Yes	Yes	Yes	No
Automated Documentation / Ticket Notes	Yes	Yes	Yes	Yes	No
Workflow Automation	Yes	Yes	Yes	Yes	Yes
AI Knowledge Article Generation	Yes	No	No	Yes	Yes
Autonomous Ticket Resolution	Partial	Yes	No	Yes	Yes

## INTELLIGENCE LAYER

Automation handles what you already know. Intelligence handles what you do not know yet. The platforms that build a true intelligence layer surface patterns across tickets, flag at-risk clients before they churn, and give your team visibility into the health of every account. Not every platform invests equally here. For MSPs focused on proactive service delivery, this section matters more than any other.

Feature	Thread	NeoAgent	MSP Process	zofiQ	CloudRadial
<b>Learning from Ticket History</b>	Yes	Yes	No	Yes	Yes
<b>Client Health Monitoring</b>	Yes	No	No	No	Partial
<b>Proactive Account Insights / QBR Data</b>	Yes	Partial	No	No	Yes
<b>AI Root Cause Identification</b>	Yes	No	No	Yes	No
<b>Sentiment Analysis</b>	No	Yes	No	No	Yes

## TECHNICIAN EXPERIENCE

The best AI service desk does not replace your technicians. It changes what they spend their time on. This section looks at how each platform is designed to work alongside your team: whether AI is built into the surface where technicians actually work, or whether it is a separate tool they have to go find. The difference in daily experience is significant.

Feature	Thread	NeoAgent	MSP Process	zofiQ	CloudRadial
<b>AI-Native Technician Interface (built in, not bolted on)</b>	Yes	No	No	No	No
<b>Technician Copilot / AI Assist</b>	Yes	No	No	Partial	Partial
<b>AI Suggested Remediation Steps</b>	Yes	Yes	No	Yes	No
<b>AI Generated Runbooks</b>	Yes	No	No	Partial	No
<b>RMM Integration</b>	No	Yes	No	Yes	No

## PLATFORM AND INTEGRATION

A platform is only as good as how well it fits your existing stack. Most MSPs are not switching PSAs. Most MSPs are not switching RMMs. What they need is a layer that works across the tools they already have without forcing ecosystem decisions. This section looks at PSA depth, RMM connectivity, and the practical risk of lock-in.

Feature	Thread	NeoAgent	MSP Process	zofiQ	CloudRadial
<b>Multi-PSA Support</b>	Yes	Yes	Yes	Partial*	Yes
<b>Deep PSA Intelligence (native ticket context)</b>	Yes	Yes	Partial	Yes	Partial
<b>PSA Lock-in Risk</b>	No	No	No	Yes	No
<b>Third-Party Workflow Integration</b>	Partial	Yes	Partial	Yes	Partial

zofiQ is ConnectWise-native. Autotask and HaloPSA listed as supported but ConnectWise is the clear priority

## BUSINESS MODEL

Features matter. So does what you are paying for them and how fast you can get to value. Usage-based pricing sounds affordable until call volume spikes. Platforms that require weeks of training data before they work cost you more than their sticker price suggests. This section looks at the practical realities behind the pricing models.

Feature	Thread	NeoAgent	MSP Process	zofiQ	CloudRadial
Flat / Predictable Pricing	Yes	No*	No**	No***	Yes
Works Day One (no training data required)	Yes	Yes	Yes	No	Yes
Time to Deploy	Hours	Hours	Hours	Weeks	Days

### NeoAgent is credit-based per ticket automation

\*\*MSP Process charges per minute for voice AI

\*\*\*zofiQ pricing opaque, confirmed expensive by multiple sources in internal conversations

The AI service desk category is not slowing down. The vendors on this list are shipping fast, roadmaps are moving, and the gaps we have documented today will shift over the next two quarters. What will not change is the fundamental question every MSP has to answer: do you want a platform that automates the back office, or one that transforms the entire service experience, including how your clients feel every time they reach out?

Thread is built around that second answer. Intelligent Service Delivery means your service desk does not just process tickets faster. It gets smarter about every client, surfaces the right information at the right moment, and delivers an experience that earns trust instead of just closing queues.

If you want to see how Thread fits your specific environment, the best next step is a live demo. You will see the platform working against your real use cases, not a scripted walkthrough.

Book your demo at [getthread.com/demo](https://getthread.com/demo)

